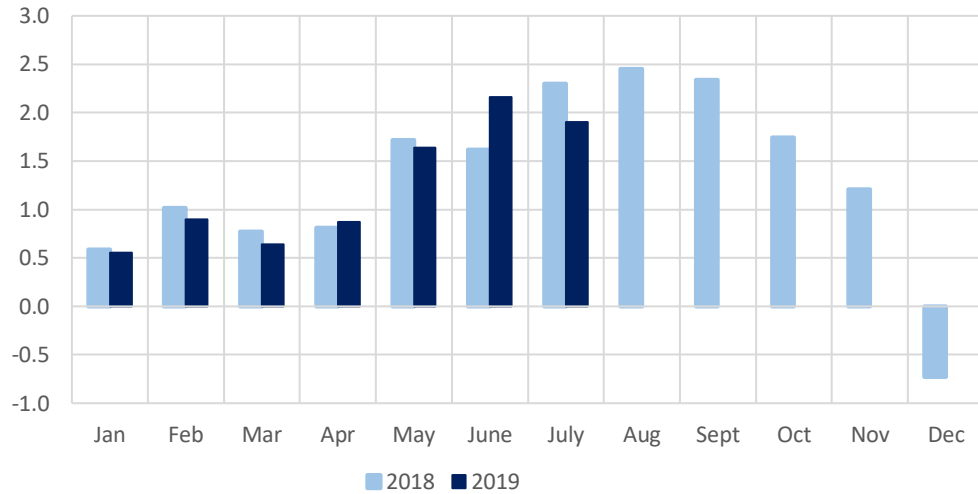


## Summary of the execution of the revenue and expenditure plan (monthly data)

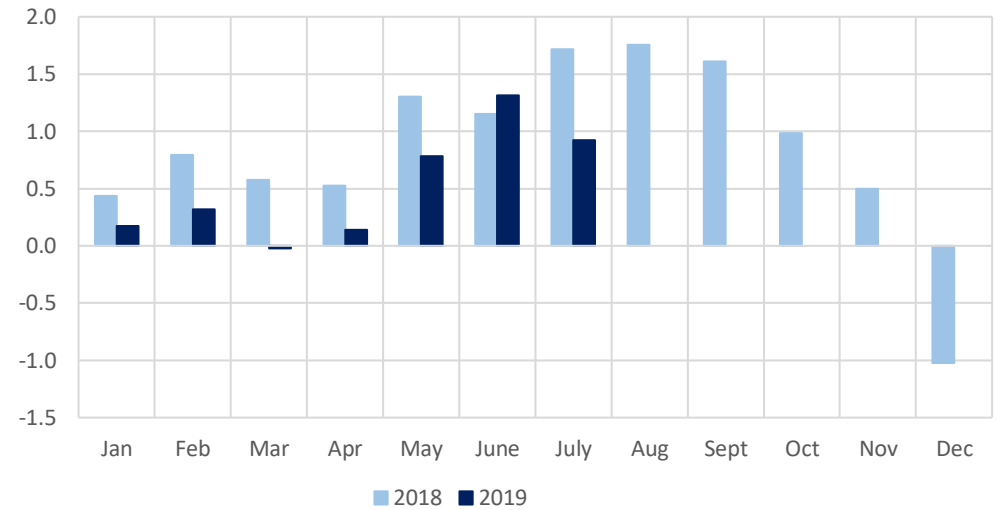
January 2018 – July 2019, % of GDP

Source: State Treasury

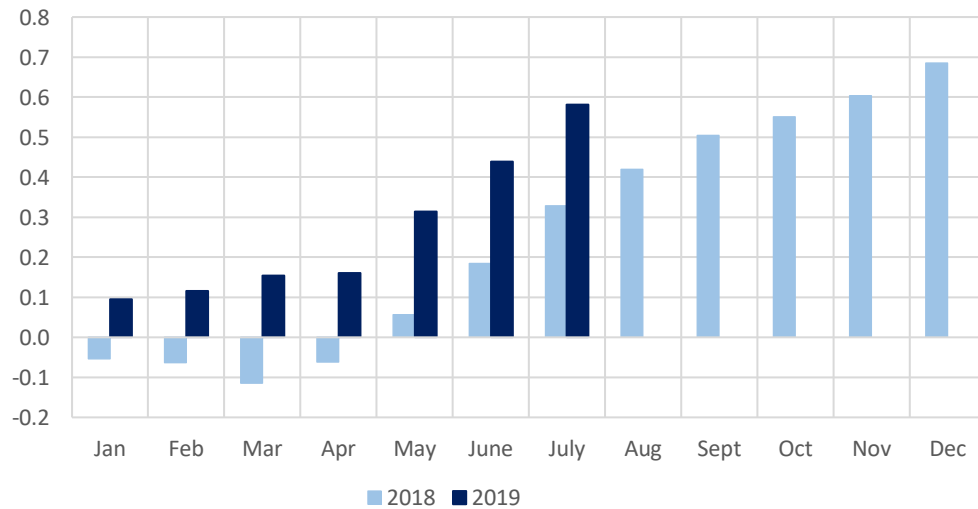
Government consolidated budget balance (cash flow), % of GDP, cumulative values, end-of-period



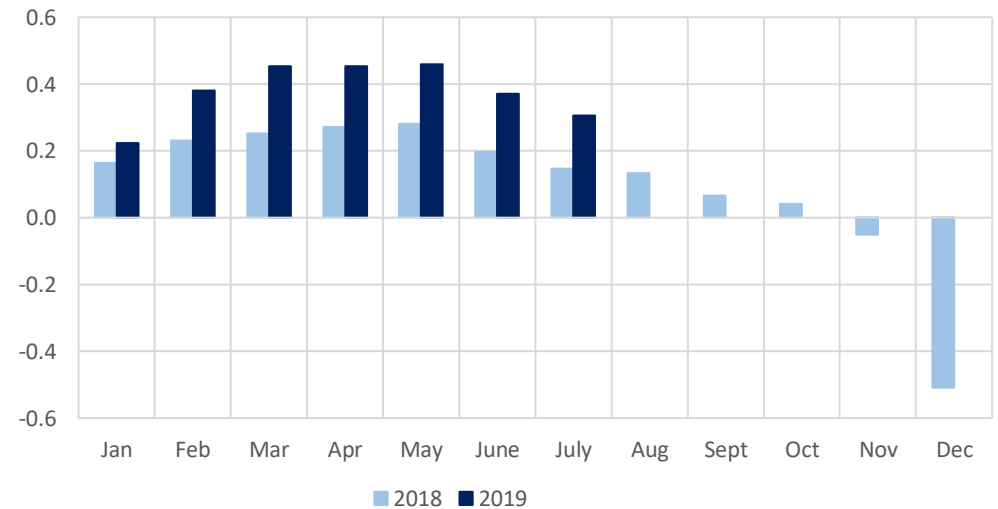
Central government basic budget balance (cash flow), % of GDP, cumulative values, end-of-period



Central government special budget balance (cash flow), % of GDP, cumulative values, end-of-period



Local government budget balance (cash flow), % of GDP, cumulative values, end-of-period

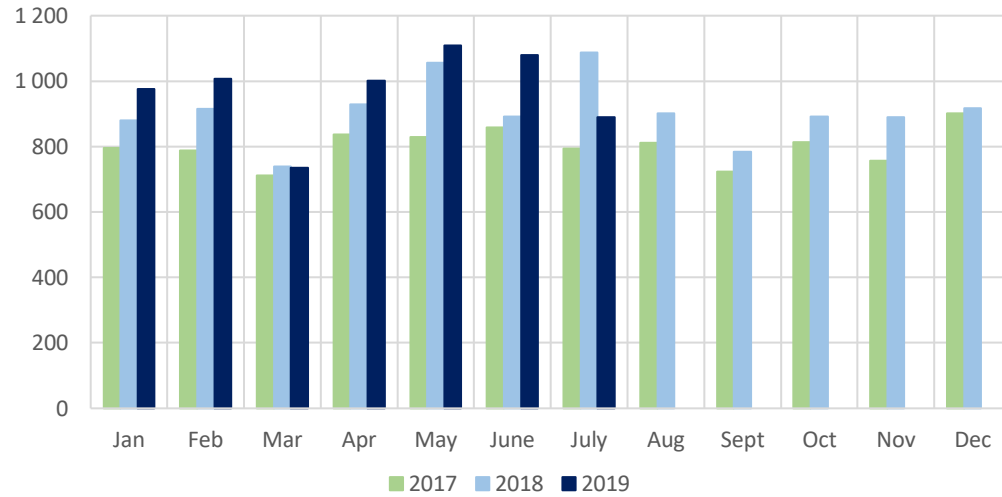


## Summary of the execution of the revenue plan (monthly data)

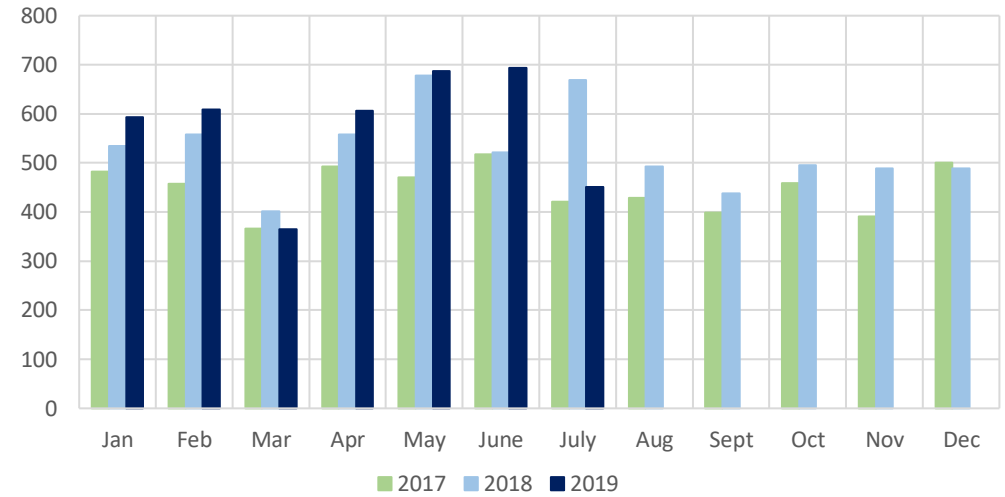
January 2017 – July 2019, million euro

Source: State Treasury

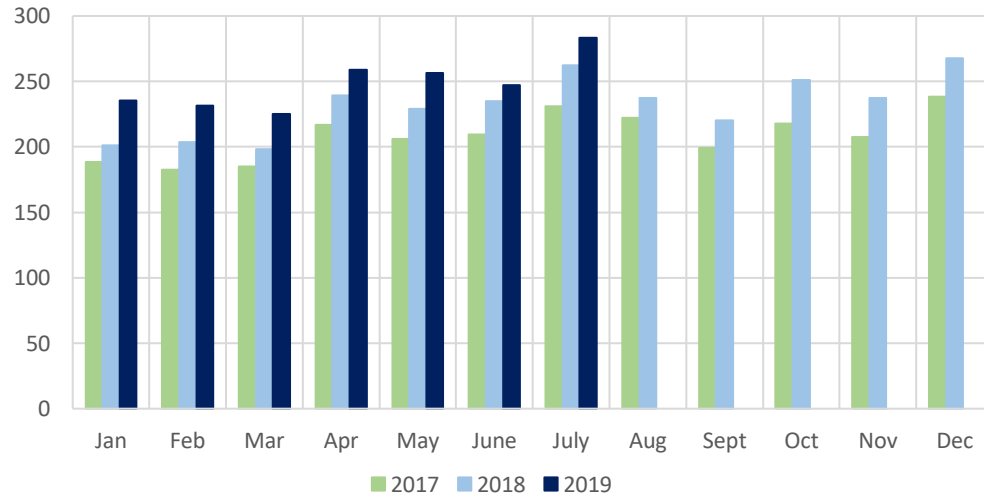
Government consolidated budget revenue (cash flow), mill. €



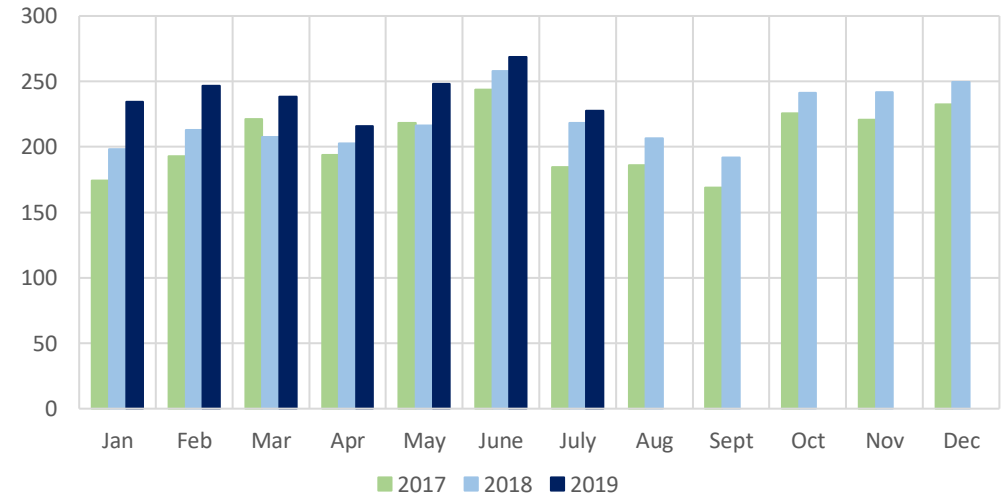
Central government basic budget revenue (cash flow), mill. €



Central government special budget revenue (cash flow), mill. €



Local government budget revenue (cash flow), mill. €

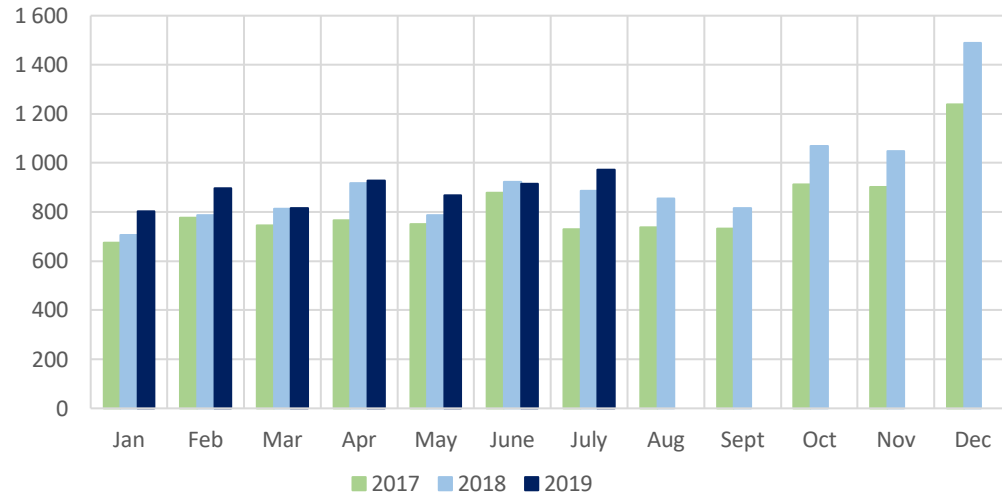


## Summary of the execution of the expenditure plan (monthly data)

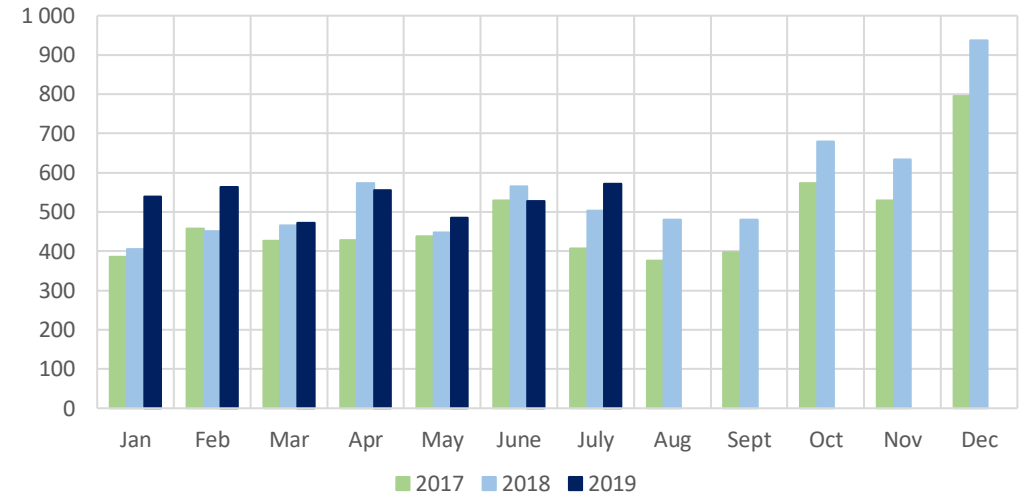
January 2017 – July 2019, million euro

Source: State Treasury

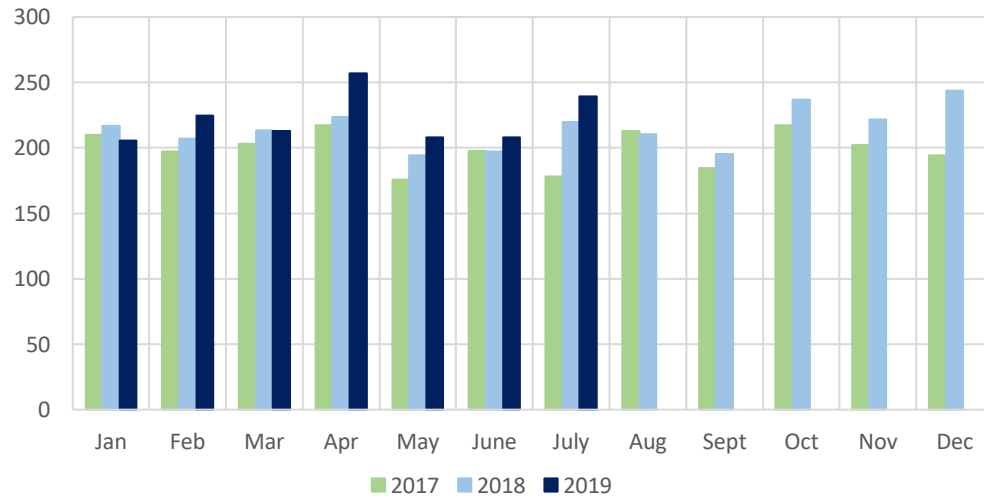
Government consolidated budget expenditure (cash flow), mill. €



Central government basic budget expenditure (cash flow), mill €



Central government special budget expenditure (cash flow), mill. €



Local government budget expenditure (cash flow), mill. €

